

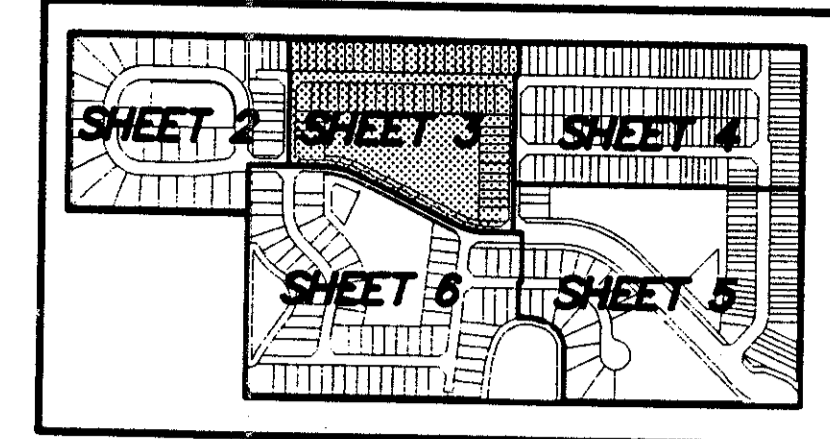
PLAT OF
MIZNER POINTE OF BOCA, VIA ANCHO

PLANNED UNIT DEVELOPMENT
BEING A REPLAT OF PORTION OF BLOCK 79, PALM BEACH FARMS COMPANY PLAT NO. 3,
PLAT BOOK 2, PAGES 45-54, PUBLIC RECORDS OF PALM BEACH COUNTY, FLORIDA,
LYING IN SECTION 20, TOWNSHIP 47 SOUTH, RANGE 42 EAST.
PALM BEACH COUNTY, FLORIDA.

SHEET 3 OF 6 SHEETS FEBRUARY 1997

0690-001

98

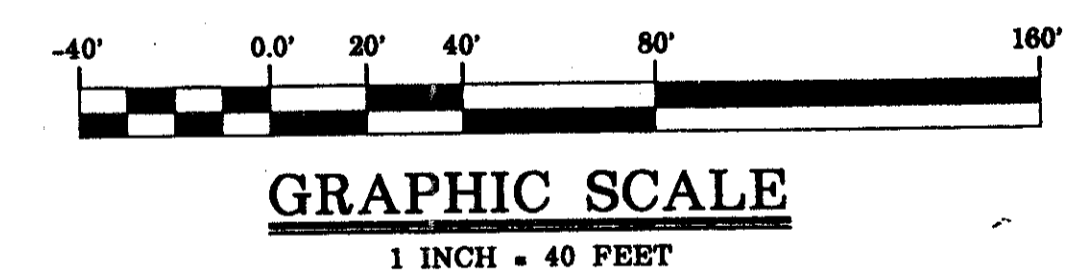
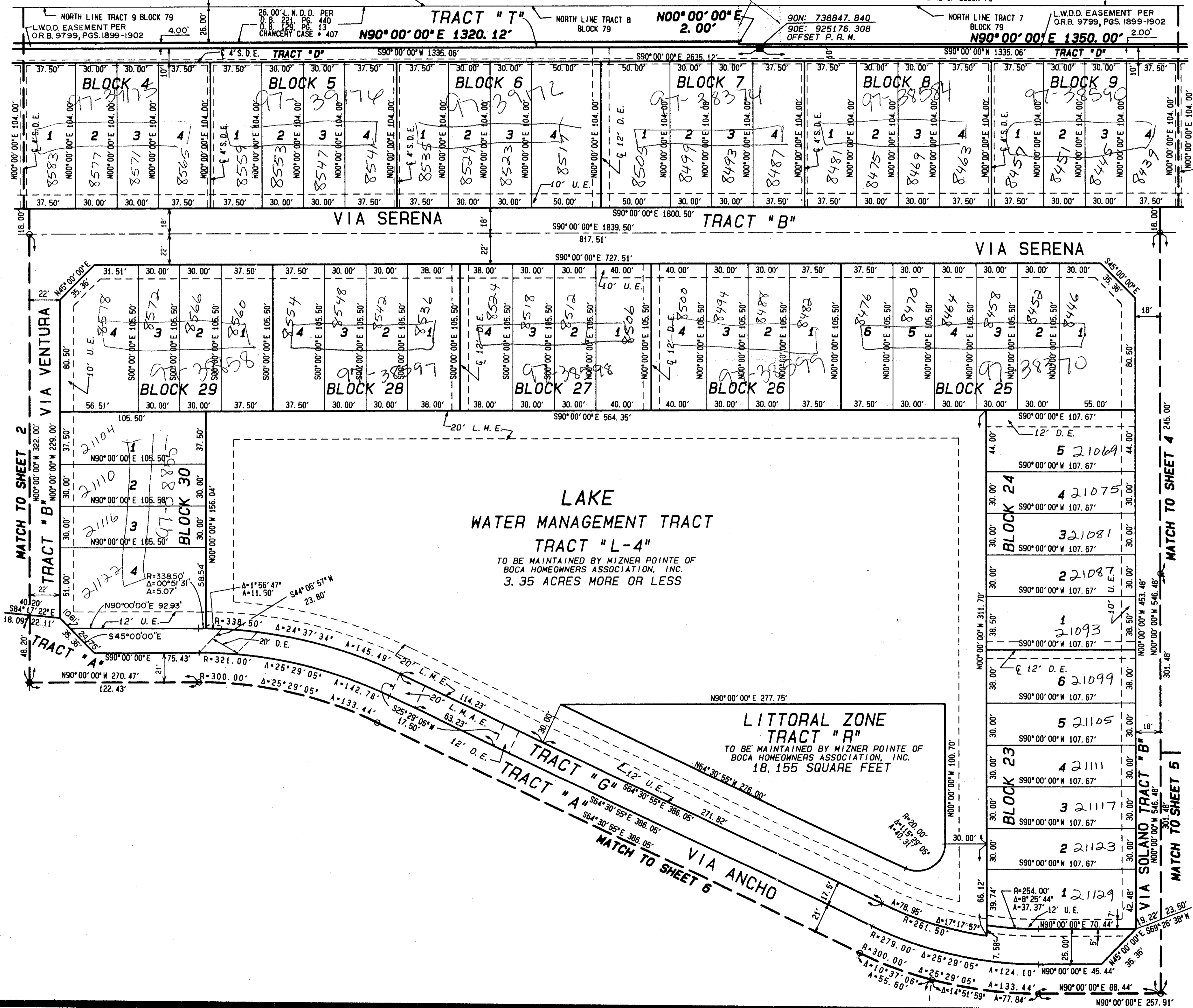


KEY MAP
N.T.S.

PLAT OF BOCA LAKES CONDO
(O. R. B. 2114, PAGE 737)

PLAT OF CONCORD GREEN P. U. D.
(P. B. 45, PGS. 27 & 28)

LAKE WORTH DRAINAGE DISTRICT LATERAL CANAL L - 46
(O. R. B. 1585, PAGE 505)



- LEGEND:**
- P.B. = PLAT BOOK
 - PG. = PAGE
 - P.R.M. = PERMANENT REFERENCE MONUMENT
 - Δ = DELTA ANGLE
 - ARC = ARC LENGTH
 - C.B. = CHORD BEARING
 - O.R.B. = OFFICIAL RECORD BOOK
 - D.B. = DEED BOOK
 - R/W = RIGHT-OF-WAY
 - F.P.S.L. = FLORIDA POWER & LIGHT CENTERLINE
 - CT. = ROOF OVERHANG AND RECIPROCAL MAINTENANCE EASEMENTS
 - R.R.M.E. = DENOTES SET P.R.M. # 2297 UNLESS OTHERWISE NOTED
 - = DENOTES FOUND P.R.M. AS NOTED
 - = DENOTES SET PERMANENT CONTROL POINT (P.C.P.)
 - = DENOTES ZERO LOT LINE ON THE SIDE OF THE LINE SHOWN.
 - S.D.E. = SWALE DRAINAGE EASEMENT
 - P.U.D. = PLANNED UNIT DEVELOPMENT
 - U.E. = UTILITY EASEMENT
 - D.E. = DRAINAGE EASEMENT
 - L.M.E. = LAKE MAINTENANCE EASEMENT
 - L.A.E. = LIMITED ACCESS EASEMENT
 - * = RADIAL LINE
 - P.O.B. = POINT OF BEGINNING
 - L.M.A.E. = LAKE MAINTENANCE ACCESS EASEMENT

THIS INSTRUMENT WAS PREPARED BY PEDRO B. MORALES IN THE OFFICES OF DAILEY-FOTORNY, INC., 5050 10TH AVENUE NORTH, LAKE WORTH, FLORIDA, 33463

SUBDIVISION * Mizner Pointe of Boca Via Ancho
BOOK 80 PAGE 98
FLOOD ZONE B FLOOD MAP #2300
QUAD 454 ZONING PUD
52 ZIP CODE 33463
PUD NAME Mizner Pointe of Boca Via Ancho

Dailey-Fotorny, inc.
land surveyors - planners
5050 10th Avenue North Suite A - Lake Worth, FL 33463-2062
Phone: 561-965-8787 Fax: 561-965-8983